

# CATA

## FELIX C

Multipurpose shallow draft tug

IMO: 9394038  
CALL SIGN: OJVI  
MMSI: 230049000

E-mail: [felixc@raumacata.fi](mailto:felixc@raumacata.fi)

Nationality: FI

Port of registry: Rauma

Class: Bureau Veritas

LOA 29,8 m

BOA 9,5 m

BP 45,4 t

Max draft: 3,10m

Gross tonnage: 239 t



### Machinery

Main engines	Mitsubishi S16R MPTK 2 x 1170 kW each
Auxiliaries	2 x Catepillar C 4,4 Dit, 1 x Mitsubishi 400 kVa for hydraulics
Propulsion	Twin screw + Kort nozzles
Bow Thrusters	186 KW (250 hp)
Rudders	4 fishtail rudders – 2 rudders behind each propeller
Speed	10,5 kn
Traffic area:	Unrestricted

### Deck Cranes

Main deck crane	Remote controlled HEILA HLRM 200 – 4SL, max 9,0 tons @ 16,31 M, 22,5 tons @ 7,76 M
Deck Crane (project)	F729(A8) 0,71 ton @ 21,04 M 5,07 tons @ 4,8 M, Winch 2 tons
Bow crane (project)	TMP 1300 K 1,5 ton @ 3,5 M

Rauma Cata Oy

Hakunintie 21

26100 RAUMA

FINLAND

[www.raumacata.fi](http://www.raumacata.fi)

[raumacata@raumacata.fi](mailto:raumacata@raumacata.fi)



# FELIX C

Multipurpose shallow draft tug

## Deck Equipment

IMO: 9394038  
CALL SIGN: OJVI  
MMSI: 230049000  
E-mail: [felixc@raumacata.fi](mailto:felixc@raumacata.fi)  
Nationality: FI  
Port of registry: Rauma  
Class: Bureau Veritas  
LOA 29,8 m  
BOA 9,5 m  
BP 45,4 t  
Max draft: 3,10m  
Gross tonnage: 239 t

Anchor handling drum  
(Brake/pull/wire dimension)

Towing drum  
(Brake/pull/wire dimension)

Tugger winch:

Holding capacity  
Wire capacity

Moonpool

Free deck space

Stern roller, Kooiman towing puns and shark jaw in centre. Push bow rubber fender 70 cm diameter

Type KA-20-H-TR Drum  
Pull 1st layer (hauling) 100 T  
Holding Capacity (1st Layer) 150 T  
Wire capacity diam 62mm, 1500M  
Towing wire 1 x 700 m, 44mm, MBL 137,7T

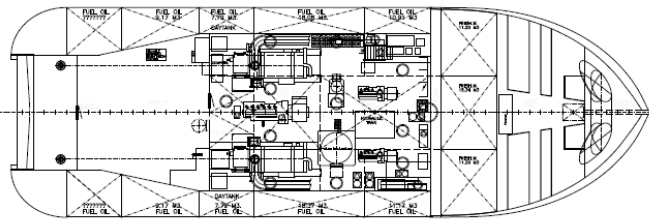
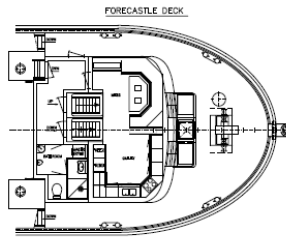
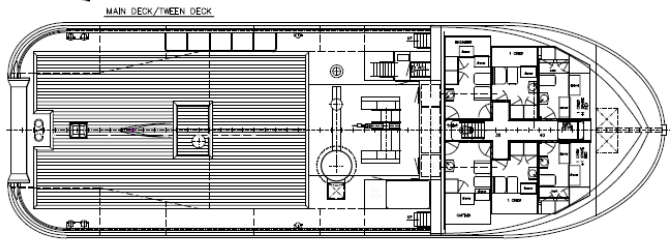
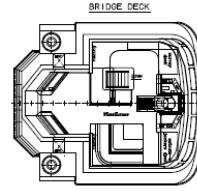
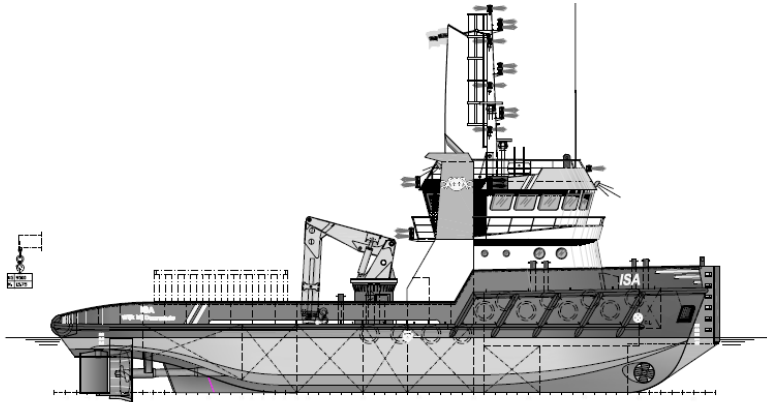
SA 10-H-TR  
Pull 1st Layer (hauling) 10T  
(1st Layer) 15T  
diam 32mm, 150M

Oval 70 cm x 50cm moulded depth 3,10m.

108 m<sup>2</sup>, 15t per m<sup>2</sup>.

Rauma Cata Oy  
Hakunintie 21  
26100 RAUMA  
FINLAND  
[www.raumacata.fi](http://www.raumacata.fi)  
[raumacata@raumacata.fi](mailto:raumacata@raumacata.fi)

\* All information given in good faith but not guaranteed



**Principal Particulars:**

- Length O.A. : 29.60 m
- Length B.P. : 26.76 m
- Breadth Mid. : 9.50 m
- Depth upperdeck at 0.5 L : 3.10 m
- Main draught : 2.50 m
- crew : 6 persons

KOOLOMAN BV			
Lidmaat: 01-01-01, 02, 03, 04, 05, 06, 07, 08, 09, 10, 11, 12, 13, 14, 15, 16, 17, 18, 19, 20, 21, 22, 23, 24, 25, 26, 27, 28, 29, 30, 31, 32, 33, 34, 35, 36, 37, 38, 39, 40, 41, 42, 43, 44, 45, 46, 47, 48, 49, 50, 51, 52, 53, 54, 55, 56, 57, 58, 59, 60, 61, 62, 63, 64, 65, 66, 67, 68, 69, 70, 71, 72, 73, 74, 75, 76, 77, 78, 79, 80, 81, 82, 83, 84, 85, 86, 87, 88, 89, 90, 91, 92, 93, 94, 95, 96, 97, 98, 99, 100			
SCALE	1:50	DATE	12-08-2010
DESIGN		NO	AD
PROJECT		NO	10-01-01
CLIENT	KOOLOMAN BV	PROJECT NO.	1001
DESIGNER	ALGEMEN PLAN	SCALE	1:50
DRAWING NAME: ALGEMEN PLAN			

\* All information given in good faith but not guaranteed